

The background is a solid blue color. On the left side, there is a large, semi-transparent white star. At the bottom left, there is a semi-transparent image of an open book with its pages fanned out. The text is centered in the middle of the page.

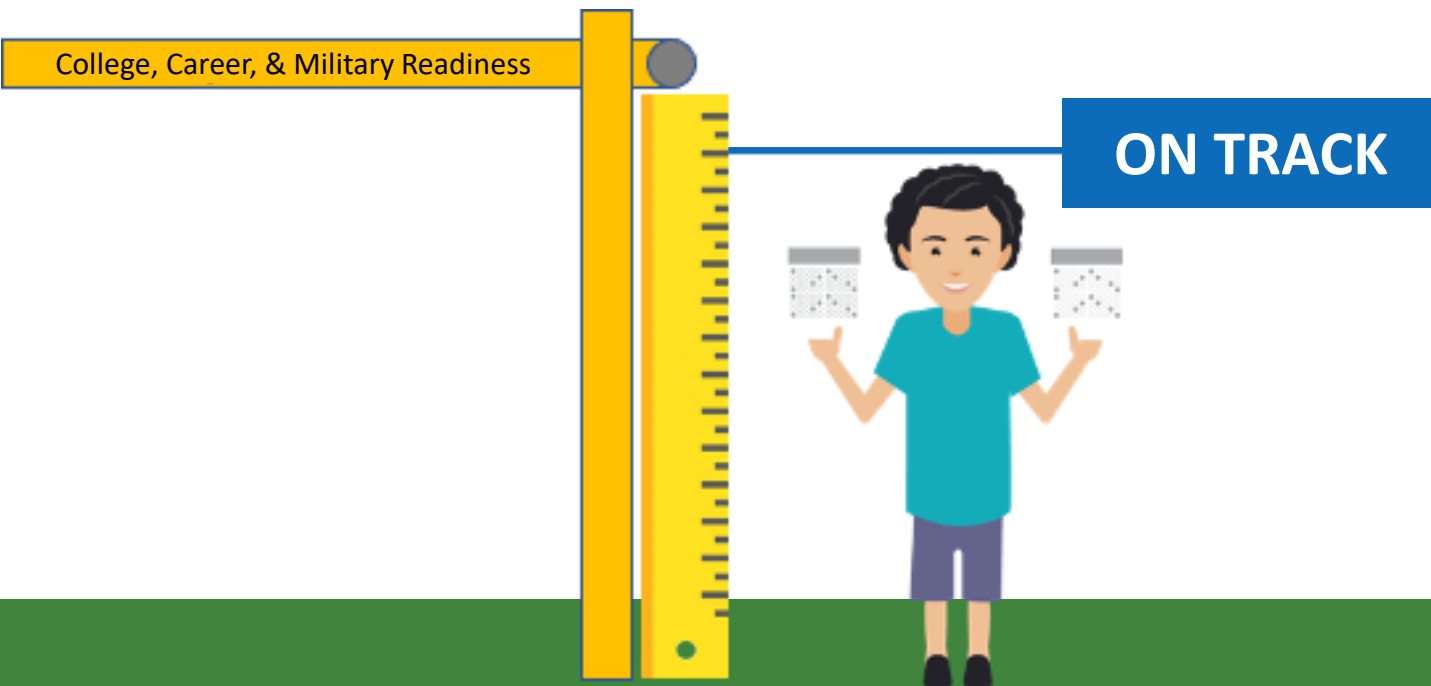
2025 *A–F* Accountability Ratings

We believe that all students can learn and achieve at high levels.



Expectations Matter, At All Grade Levels

The State Board of Education has defined what all students should know and be able to do at each grade level if they are to be well prepared for success in life. These are called the Texas Essential Knowledge and Skills (TEKS).



What does this look like in practice?

TEKS 3.5A: Represent one- and two-step problems involving addition and subtraction of whole numbers to 1,000 using pictorial models, number lines, and equations.

TEKS 3.5A: Represent one- and two-step problems involving addition and subtraction of whole numbers to 1,000 using pictorial models, number lines, and equations.



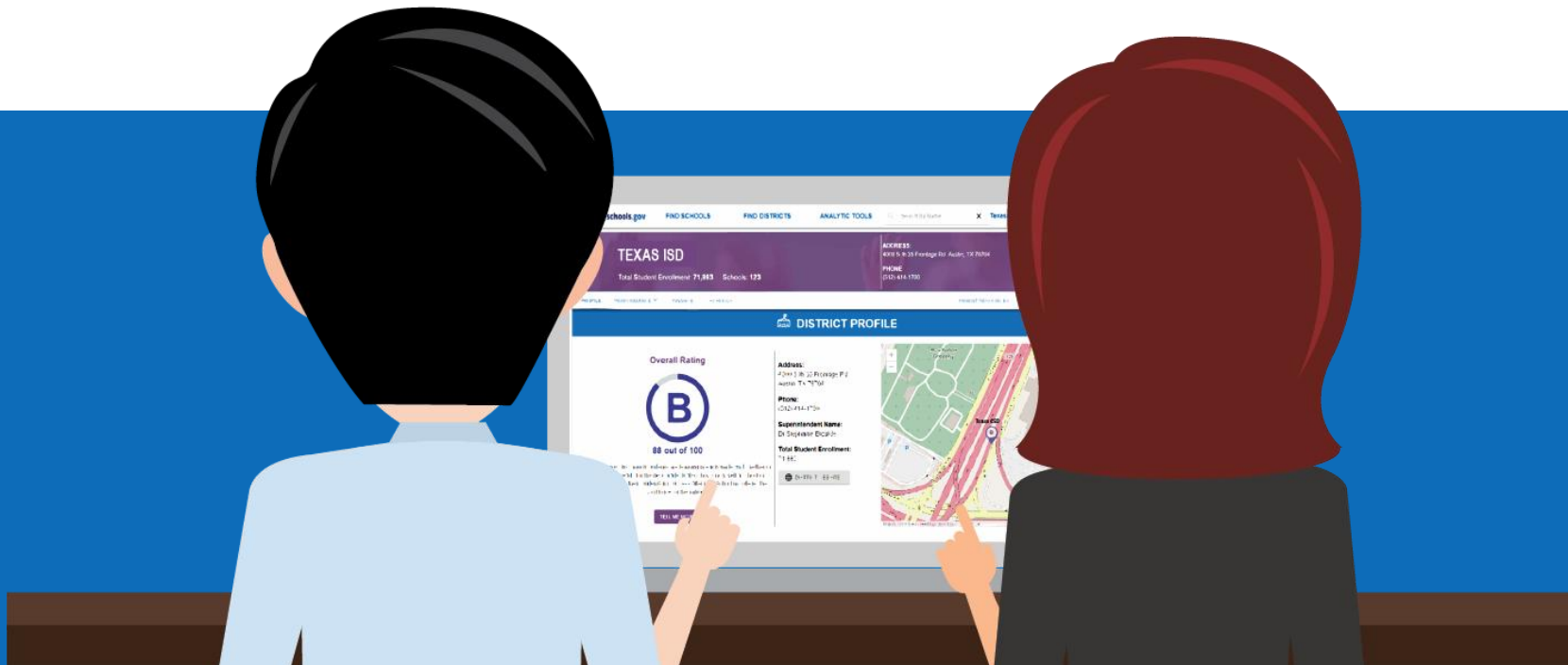
Actual 3rd Grade STAAR Question:

An art teacher had 736 crayons. She threw away 197 broken crayons. Then she bought 150 more crayons. Which equation shows how to find the number of crayons the art teacher has now?

- A) $736 - 197 - 150 = \underline{\quad}$
- B) $736 - 197 + 150 = \underline{\quad}$
- C) $736 + 197 + 150 = \underline{\quad}$
- D) $736 + 197 - 150 = \underline{\quad}$

Clear Performance Information Helps Students

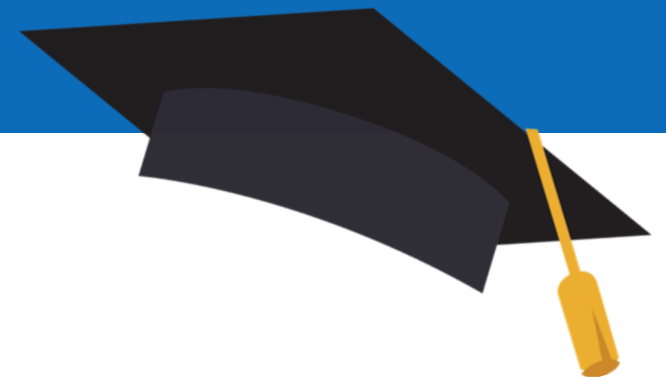
You can't improve what you can't see. To serve all students well, educators, parents, businesses leaders, and community members need easy access to information regarding how schools and districts are doing.



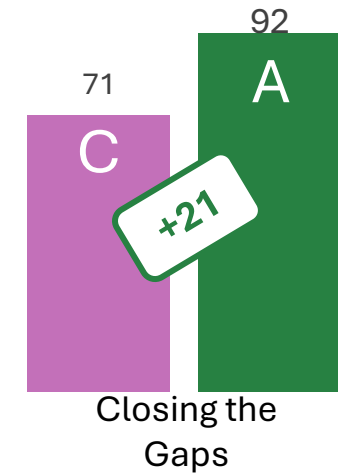
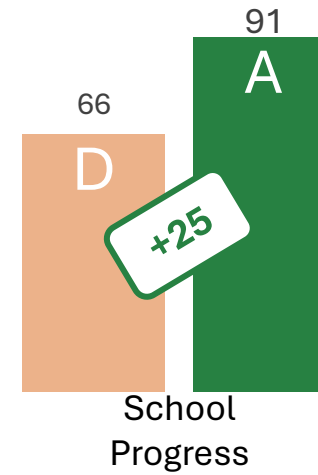
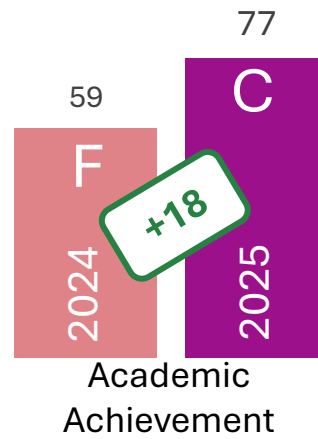
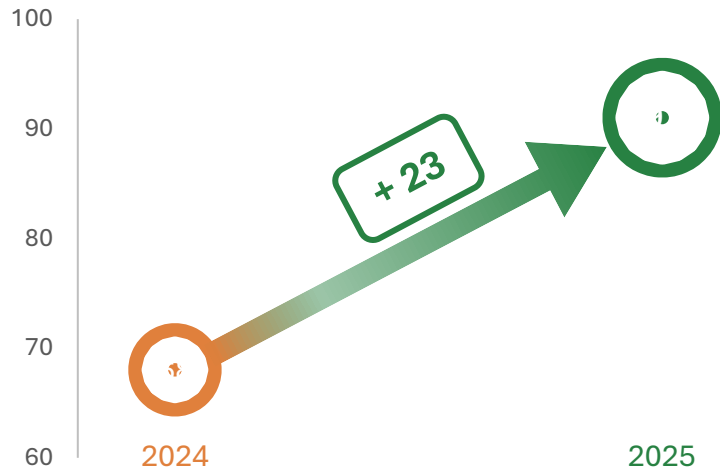
Monitoring performance with school ratings has been shown to have long term benefits for students:

“Our analysis reveals that pressure on schools to avoid a low performance rating led low-scoring students to score significantly higher on a high-stakes math exam in 10th grade. These students were also more likely to accumulate significantly more math credits and to graduate from high school on time.

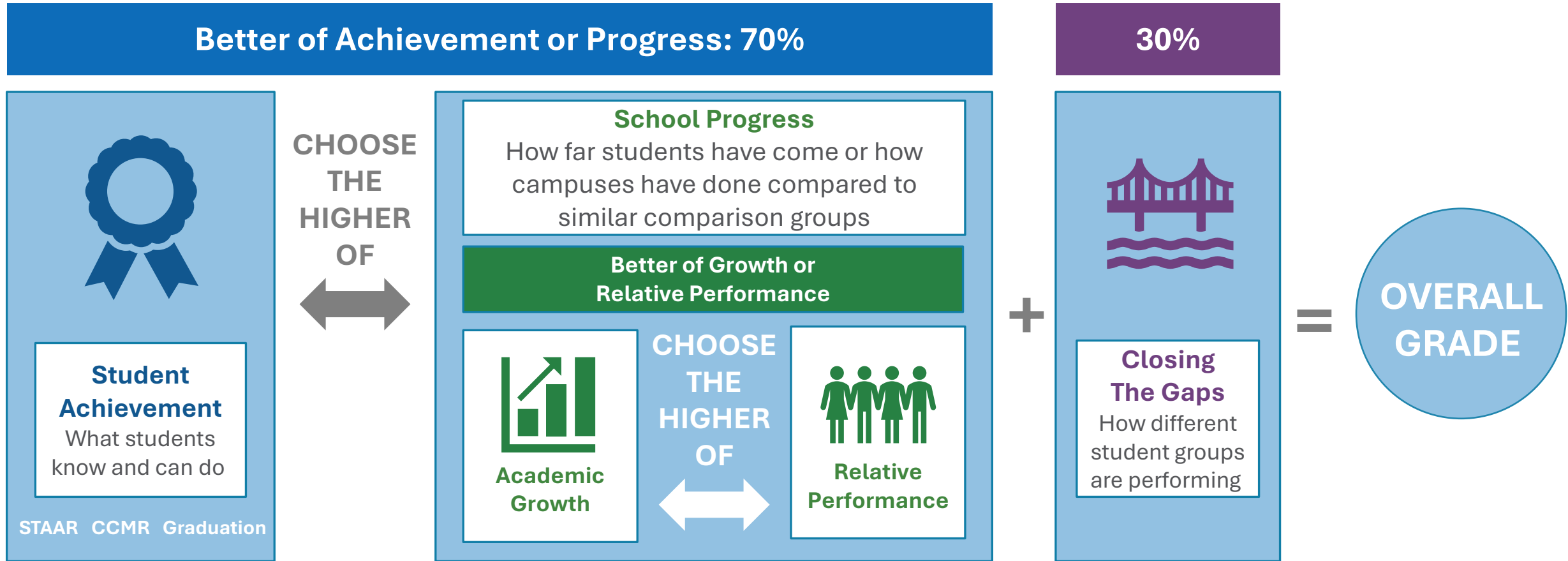
Later in life, they were more likely to attend and graduate from a four-year college, and they had higher earnings at age 25.”



Jefferson Elementary



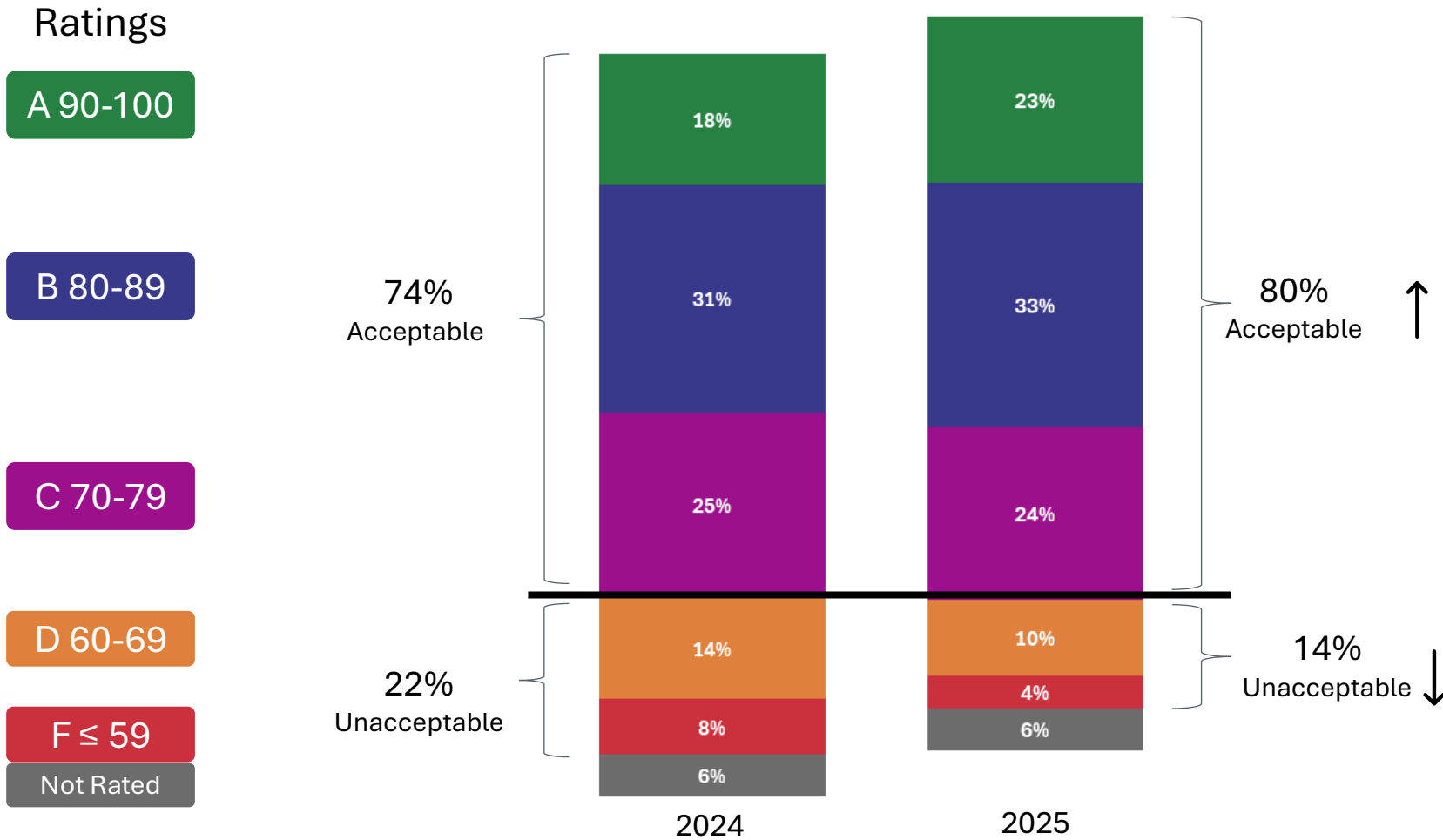
A-F Ratings Reflect the Better of Achievement or Progress



Note: If a campus receives a D or an F for 3 of the 4 domains listed above, their final scale score is capped at 69 and 59 (respectively), unless the campus is not scored on all four domains, or the student achievement domain is above a D or F (respectively).

2025 A–F ratings increased overall from 2024 with slightly over 30% of campuses showing an increase in ratings.

Campuses: 2024 vs 2025 Ratings



31% campuses increased in ratings from the prior year.

Stayed the Same	Increased	Decreased
4856	2714	1290
55%	31%	15%

85% of campuses stayed in the same score or improved from the prior year.

757 campuses moved from a score below an A in 2024 to an A in 2025.

Campuses: 2024 vs. 2025 Ratings

757 campuses moved from below an A in 2024 to an A in 2025.

2024	2025 Ratings				
	A ≥90	B 80-89	C 70-79	D 60-69	F ≤59
A ≥90	1266 79%	307	20	4	0
B 80-89	637	1595 58%	434	73	11
C 70-79	95	812	1008 45%	278	39
D 60-69	20	220	492	353 29%	124
F ≤59	5	71	152	210	215 33%
Total	2023	3005	2106	918	389

Our accountability system gives all campuses the ability to earn high scores no matter where students begin.

- 361 high poverty campuses earned an A in 2025. A few examples:



High Poverty \geq 80% Economic Disadvantage

Campus	District	% Eco Dis	Scale Score
REACH HIGH SCHOOL	CASTLEBERRY ISD	87.8	96
NEW SUMMERFIELD SCHOOL	NEW SUMMERFIELD ISD	81.4	94
VETERANS MEMORIAL ELEMENTARY	ROMA ISD	93.9	93
HERITAGE ACADEMY OF DEL RIO MIDDLE*	HERITAGE ACADEMY	85	93
ROBERTS ELEMENTARY	LUBBOCK ISD	80	93
BOWIE ELEMENTARY	HARLINGEN CISD	93.4	92
COOPER ACADEMY AT NAVARRO*	SAN ANTONIO ISD	91.8	92
PRESA ELEMENTARY	YSLETA ISD	84.1	92
BLAIR ELEMENTARY	CARROLLTON-FARMERS BRANCH ISD	84	92
FOSTER MIDDLE	LONGVIEW ISD	83.5	92
GOODRICH HIGH SCHOOL	GOODRICH ISD	98.5	90
HOPE HIGH SCHOOL	CALHOUN COUNTY ISD	81	90

*Alternative Education/Dropout Recovery Campus

Learn more about your school or district

Discover how your school and district are preparing your child for the future.

OR



Parent Resources



Technical Resources





ACCOUNTABILITY OVERVIEW

Overall Rating



87 out of 100

This measures how much students are learning in each grade and whether or not they are ready for the next grade. It also shows how well a school or district prepares their students for success after high school in college, the workforce, or the military.

[TELL ME MORE](#)

Change Over Time

School Year	Rating/Score
2024-25	B / 87
2023-24	B / 86
2022-23	B / 85
2021-22 What If	B / 87
2022-23 scores are different than previous years due to updated standards. 2021-22 What If scores apply the new standards to 2021-22 results to help compare scores from 2021-22 to 2022-23	
2021-22	B / 85

TXschools.gov also has a school finder to empower families to find a school or district that meets a student's needs.



For example, you could search for an A-rated school with a one-way dual language program for your 3rd grader in the Dallas-Fort Worth Metroplex.

Filter Your Search

Grade Levels
Grade 3 Select a grade level

Districts

School Rating
 A B C Not Rated

School Offerings

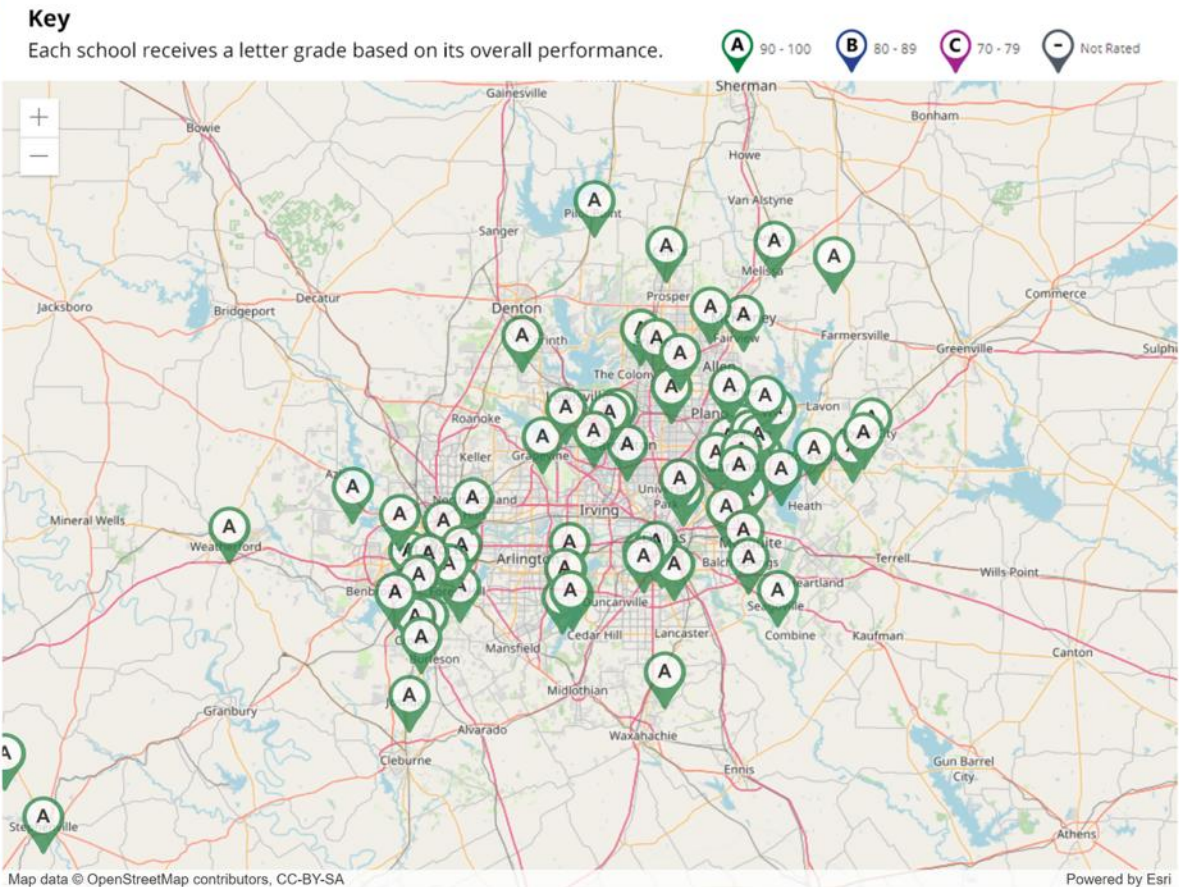
Academic Programs
One-Way Dual Language Education Select ...

Advanced Placement (AP) Courses

UIL Activities

School Type
 Charter Traditional

Other School Type
 Online / Virtual School Alternative School



**For additional
statewide data, see the
State Summary Report**